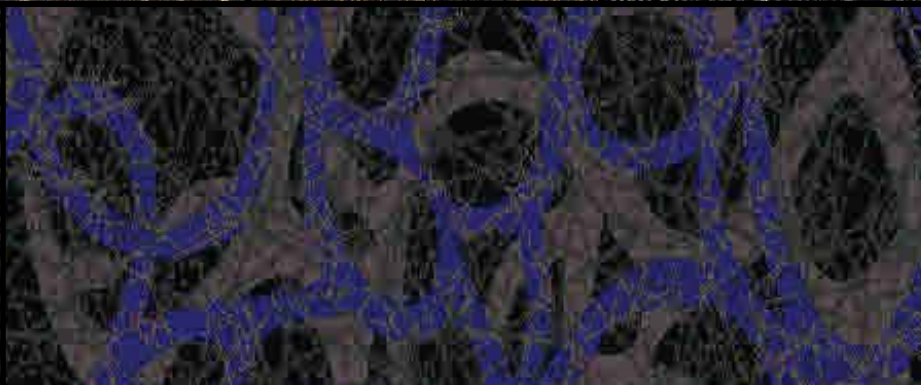
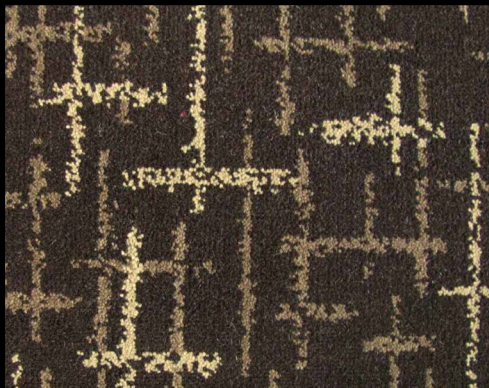
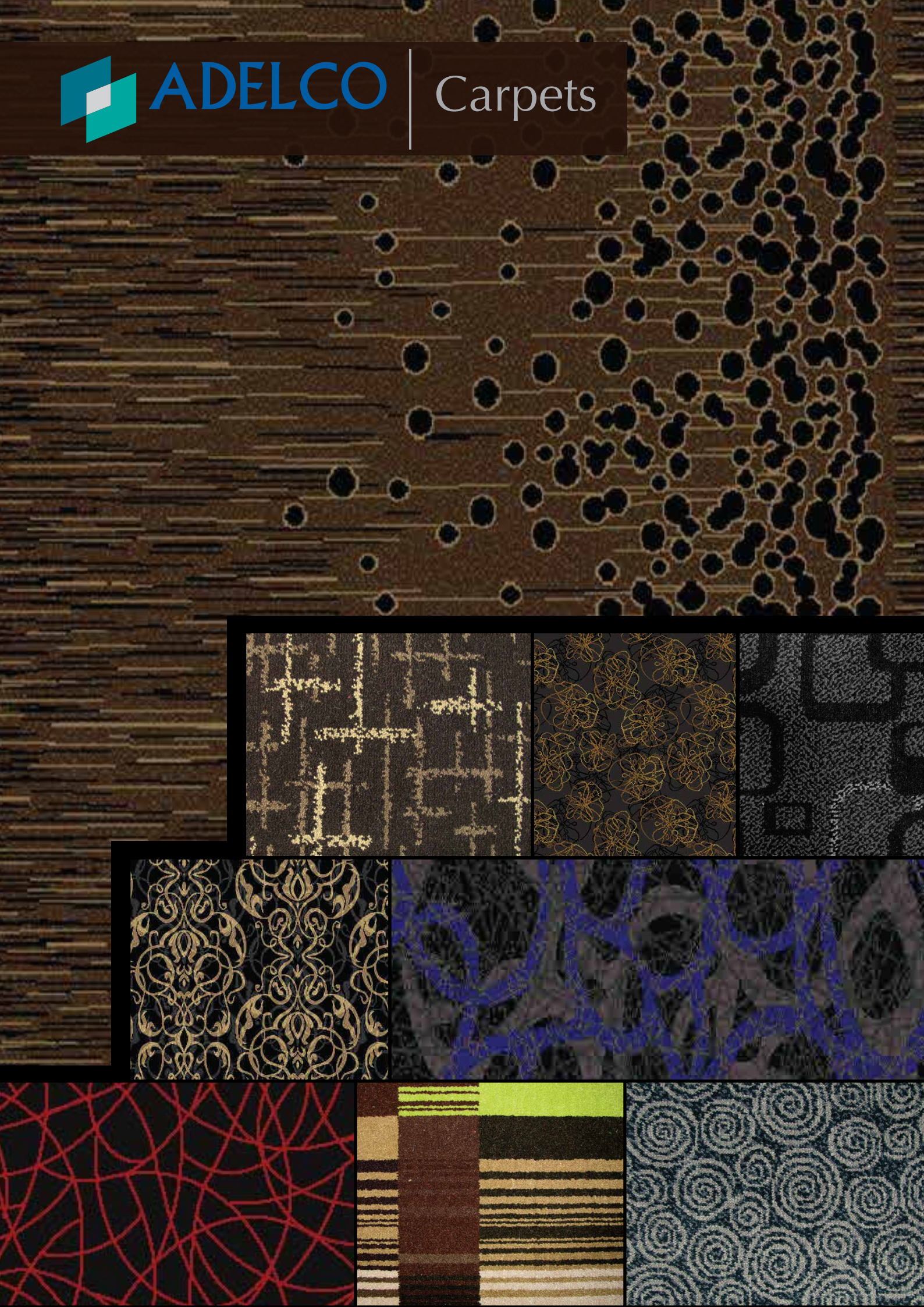




ADELCO

Carpets



Carpet Styles



Loop Carpet

There are several types of loop pile carpets level loops, sisals, textured loops and multi-level loops. Each creates a very distinct look in the home. Loop pile carpets are hard wearing and durable



Twist Carpet

Cut pile twist carpets are constructed with a higher twisted yarn causing the pile to lay in different directions, giving a more textured appearance. Twist pile carpets are hard wearing and maintain their finish.



LCL Carpet

This style of carpet is a combination of both cut and loop tufts. The tufts can be of different height, giving a textured and patterned appearance.

Carpet Fibre Types

Wool Blend Carpet

Blend carpets are made up of varying percentages of wool and synthetic fibres, offering the resilience and durability of nylon fibres with the natural appearance and luxurious feel of wool. Used often in Cut Plush Pile and Twist Pile the nylon can help reduced shedding of short fibres.

Solution Dyed Nylon Carpet

Solution Dyed Nylon carpet offers consistency of colour, improved colour fastness against light, and is treated with lifetime anti-static protection. It offers long-term resilience, durability and superior stain and odour resistance.

Nylon Carpet

Nylon is regarded as a highly versatile fibre extremely resistant to stains provided they have been properly treated. Carpets made with nylon/synthetic fibres provide long-term resilience, durability and great colour choice.

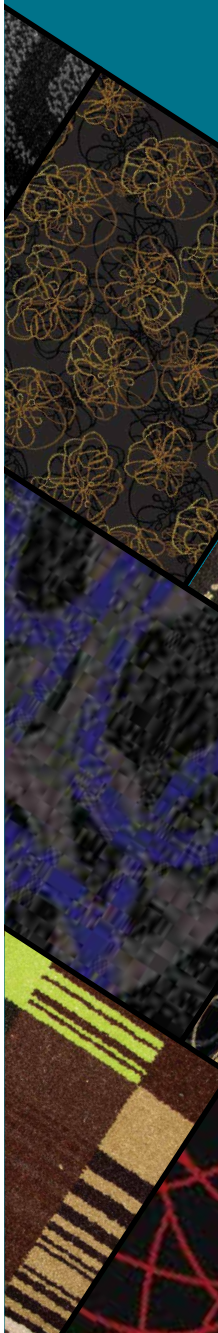
Polypropylene

Polypropylene carpet has excellent colourfastness properties with the incidence of sunlight and ozone fading greatly reduced, it also contains anti-static properties and provides value for the budget conscious consumer.

Carpet Underlay

A carpet underlay should be firm but comfortable. Poorly specified carpet underlay will lead to stretching and rucking and may result in a breakdown of the carpet backing. If you are replacing carpet, don't be tempted to use the existing underlay. It will have the same wear patterns that appear in your old carpet and these will quickly resurface in a new carpet. ADELCO warranties require their carpets be installed over new underlay.

Our underlays are made from high-density, re-bonded polyurethane foam and is specially formulated to achieve Heavy Commercial classification. Its outstanding durability is complemented by exceptional resilience to handle the heavy traffic flows in commercial, government and institutional environments need not result in any compromise to underfoot comfort.



Carpet Installation

Once you have purchased your carpet, ADELCO have a highly skilled team of carpet installers and can arrange installation within agreed time frame. Your new carpet will be installed in accordance with ADELCO Standard Floor Coverings, Laying Practices.

Our installers will:

- ✦ Minimising carpet joins
- ✦ Minimising carpet wastage
- ✦ Keeping joins away from high traffic areas where possible
- ✦ Taking consideration of ambient light
- ✦ Taking consideration of flow of traffic

“How to ensure your installation goes smoothly on the day”

Thank you for choosing ADELCO for your flooring supply and installation, we sincerely appreciate your custom.

Here are a few tips to ensure your installation goes smoothly on the day.

Payment

- ✦ Ensure we have received full payment for materials 3 days prior to the installation date.

Furniture

- ✦ Furniture, if being moved by client needs to be completely removed
- ✦ Computers, Printers & Fax machines are the sole responsibility of the client
- ✦ Office stationary to be boxed up
- ✦ Ensure bookcases and cupboards that are being moved around are emptied out

Other Tips

- ❖ Ensure that pets are isolated from installation area as on the day
- ❖ Painting needs to be completed at least 2 days prior to installation
- ❖ Power needs to be made available on the day of installation
- ❖ All other trades need to be clear of area to be installed on the day of installation
- ❖ Parking needs to be made available to installers
- ❖ Doors requiring cutting needs to be completed prior to installation
- ❖ Existing floor coverings if removed by client, removal all staples, scrape floor clean & Vacuum
- ❖ In-Floor cables under carpet - ADELCO takes no responsibility for any damage to either item & should be notified if they are present prior to installation

Carpet Care and Maintenance

Regular Carpet Vacuuming

Once carpet is laid it should be lightly and frequently vacuumed for the first week. This will remove lint, dust and fluff.

Vacuuming should continue at least weekly after that to remove soil and dirt. Quickly removing soil will reduce abrasive forces on the carpet's pile fibre. For heavy traffic areas, slow repeated vacuum strokes over the same area of carpet may be necessary. Always vacuum against the natural direction of the carpet pile to help remove dirt. When finishing, vacuum in the direction of the carpet pile to achieve a uniform finish.

Vacuum Cleaner types And Carpet

Upright Cleaners

Upright cleaners are particularly good as they incorporate a carpet pile agitator that lifts the carpet pile and helps remove dirt and grit. However care is required as over-use with the agitator as can damage the carpet pile surface in some cases.



Barrel Cleaners

Barrel cleaners rely on suction removal only and most perform the task quite well. Some barrel cleaners now have power head attachments to agitate the carpet pile in the same manner as upright cleaners.



Ensure the vacuum cleaner is kept in a sound mechanical condition, and that brushes are cleaned and replaced when worn out. Empty the dust collection bag frequently as suction efficiency is reduced considerably, even when the bag is half full.

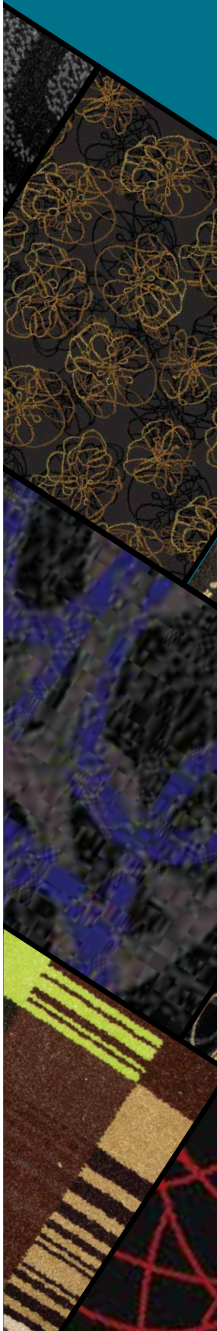
Most carpet cleaners now come with micro filter systems to ensure the fine particles (e.g. allergens) are removed. To minimise dust sensitivity, make sure cleaners have a multi filter and micro filter system.

Spot Cleaning

Remove any spillage as soon as possible before it penetrates the carpet fibre and pile. In the case of spills, remove the excess spillage immediately by first scraping any solids and blotting liquids with an absorbent material from the carpet. Use a spoon or blunt knife to remove the bulk of semi-solids or greasy substances and follow this by blotting.

Always begin at the outer edge and work towards the center of the stained carpet area using a blotting or dabbing motion. After most of the spill has been absorbed, place a fresh pile of paper towels over the area and place a flat weight on them. Never rub a stain.

FOR CLEANING AND MAINTENANCE OF RESIDENTIAL AND COMMERCIAL CARPETING, CONTACT US ON (011 4320600 /011 2323823)





ADELCO

Carpets

ADELCO

(011 4320600 / 011 2323823)

Web : www.adelco.lk

E-mail : info@adelco.lk

21, Sri Sumanathissa Mawatha,

Colombo -12